



# Newsletter

## Winter 2024

### Holiday Schedule

If your pickup day falls on a weekday on or after any of the holidays listed below, your pickup will be delayed by one day during that week. Friday collections will take place on Saturday.

**The following holidays are observed by Western Disposal:**

**Memorial Day** — May 27, 2024

**Independence Day** — July 4, 2024

**Labor Day** — Sept. 2, 2024

**Thanksgiving Day** — Nov. 28, 2024

**Christmas Day** — Dec. 25, 2024

**New Year's Day** — Jan. 1, 2025

For holidays not listed above, your residential collection service will not be affected. For questions give us a call at 303-444-2037 or refer to your collection calendar.

### SPRING ROUNDUP

Save Big on Junk Removal!



April 1-30  
2024

5 Items  
Only  
**\$99**

Call 303-444-2037

### Wasted Food in Focus

In October of 2023, the EPA released an update to its Food Recovery Hierarchy, now called the Wasted Food Scale, recognizing additional waste pathways and quantifying the environmental impacts of wasted food based on each.

Preventing wasted food remains in the top spot, as it reduces or avoids additional food production and the climate and other environmental impacts that go with it.

It's worth noting that in 2019, 6 million tons of wasted food was generated in the food retail, food service, and residential sectors, and about 60% of this food was sent to landfills.

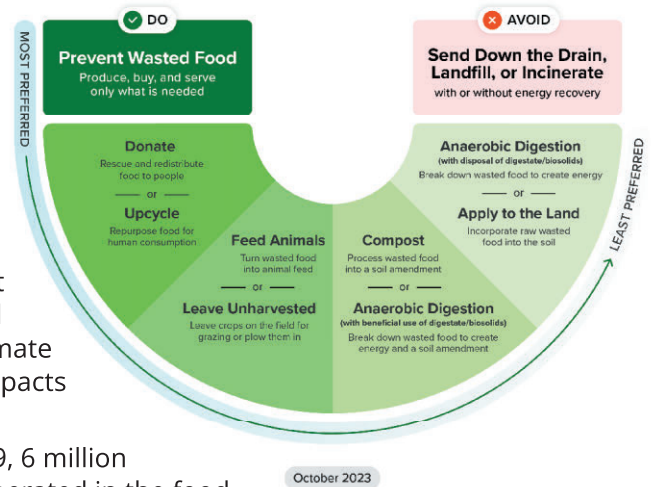
The other pathways in shades of green demonstrate beneficial or near-neutral global warming potential. The ranking of composting has been elevated to the same level as anaerobic digestion (with beneficial use of digestate), mainly because the scale now considers the value of end products in the assessment.

*continued on page 2*



#### Wasted Food Scale

How to reduce the environmental impacts of wasted food



October 2023

### Collection Times May Vary!

Even if your collection is typically later in the day, Western asks residential customers to have their carts at the curb by 7 AM on collection day. Road construction, route adjustments, weather, holidays, and traffic can all affect actual collection times.

For some customers, there may also be several hours between the time their trash is collected and the time the driver returns to collect recycling or compost Frank & Jane Eichstaedt. Most often, the reason for this collection gap is that the same driver and truck are being used for two different materials. So, if a driver has several hundred trash stops to make, all those must be completed and the material emptied before returning for the 2<sup>nd</sup> material.

We appreciate your cooperation!



## Wasted Food in Focus (continued from page 1)

Landfilling also retained its spot as the least preferred of all pathways, (along with incinerating or sending food down the drain). These methods stand out for their sizable methane emissions. The EPA's first-ever published estimates of annual methane emissions from landfilled food waste, *Quantifying Methane Emissions from Landfilled Food Waste*, found that municipal solid waste



(MSW) landfills are the third largest source of methane emissions from human activities in the United States, and that wasted food comprises about 24 percent of MSW. Because it decays rapidly, wasted food in landfills is contributing to more methane emissions than any other landfilled material.

Tossing those banana peels, eggshells, and leftover mashed potatoes into the trash may not seem significant. However, the data is clear that beyond preventing food waste and redistributing excess food, composting is one of the most impactful activities available to our community to reduce methane emissions.

Sources and Additional Reading:

<https://www.epa.gov/sustainable-management-food/wasted-food-scale>  
*From Field to Bin: The Environmental Impacts of U.S. Food Waste Management Pathways (Parts 1 & 2)*

*Quantifying Methane Emissions from Landfilled Food Waste*

## Recycling: Small Household Appliances

While household appliances are ALLOWED in the landfill, they don't have to go in the trash. Bring them to Western for recycling\*! Appliances such as hair dryers, curling irons, vacuum cleaners, coffee makers, and microwaves - basically anything with a motor and a cord, can be recycled. Adam Pastula Yes, even the hard plastic gets a second life. Electronics and small household appliances collected by Western are processed by Blue Star Recyclers, winner of the 2021 Mastercard Small Business Impact Award in the Sustainability category. BlueStar recycles over 10,000 tons of e-waste annually and creates permanent jobs for individuals with disabilities.

\*Fees apply



## Win One Month Free Trash Service

Several lucky residential customers will receive one month of free trash service for finding their names in this newsletter!

If you find your name, call our Customer Service Department at 303-444-2037 to receive credit on your account for one month of free service.

## Materials Management Drop-off Center

2051 63rd Street

Hours of Operation:

Monday - Friday 7AM - 5PM

Saturday 7AM - 2PM

Phone: 303-444-5794

**Western**  
DISPOSAL SERVICES

THE WAY TO A BETTER ENVIRONMENT 

Locally Owned and Operated  
Since 1970

5880 Butte Mill Rd. • P.O. Box 9100  
Boulder, Colorado 80301

Phone: (303) 444-2037

[contact@westerndisposal.com](mailto:contact@westerndisposal.com)

[westerndisposal.com](http://westerndisposal.com)

## Snow Removal

During the winter, snow, and ice can make it difficult for our drivers to access and empty carts and containers. Please remove any snow that may block access, especially drifts or piles.

