

# Western

DISPOSAL SERVICES

## A QUARTERLY UPDATE FOR OUR CUSTOMERS

SPRING 2003

### Win One Month Free Trash Service

Several lucky customers will receive one month of free trash service for finding their names in this newsletter!

If you find your name, call our Customer Service Department at 303-444-2037 to receive credit on your account for one month of free service. Sorry, names mentioned as part of the stories are not eligible.



### Holiday Schedule

For up-to-date information about our holiday schedule, call our Holiday Hotline at 303-448-2280 or look it up at [www.westerndisposal.com](http://www.westerndisposal.com).

The following holidays will be observed by Western Disposal:

- \* **Memorial Day**..... 5/26/03
- \* **Independence Day**..... 7/04/03
- \* **Labor Day**..... 9/01/03
- \* **Thanksgiving Day**..... 11/27/03
- \* **Christmas Day**..... 12/25/03
- \* **New Year's Day**..... 1/01/04

### E-Minders

Subscribe to Western Disposal's *E-Minders* Program. This program sends you e-mail reminders of upcoming holidays, programs and other useful information. You can join by calling us at 303-444-2037 or on our web site at [www.westerndisposal.com](http://www.westerndisposal.com).

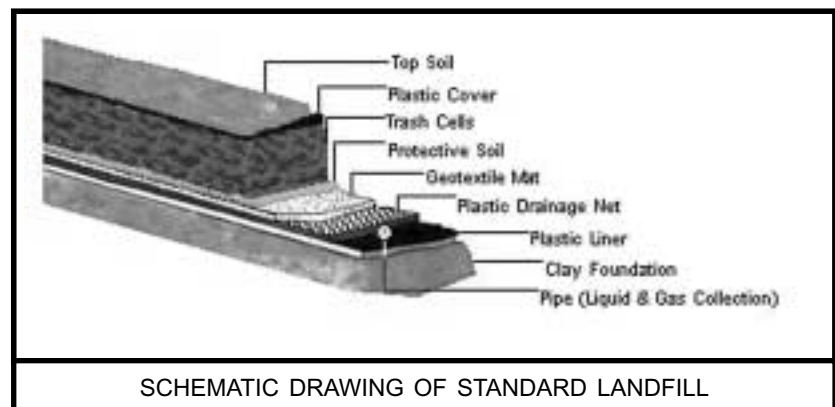
### What Happens to My Trash Once it Leaves the Curb?

by Audrey Cohin  
Western Disposal Accounts Receivable Representative

Have you ever asked yourself this question? Based on your feedback from our company surveys, I learned that, like myself, many of you were curious as to what happens to your trash. Since I am part of the Accounts Receivable Department and beginning my second year with Western Disposal, I have not had the opportunity to see first-hand the procedures that take place. I proposed to my company that I do some research of my own with our local landfills. In contacting some of them, the landfill facility of Republic Services of Colorado (in Erie) offered to give me a tour. Geoff Secor. On my visit, I learned that landfills take many steps to provide the highest level of environmental safety. From the initial proposal for a landfill, there is meticulous planning that includes precise engineering and constant quality control. Every aspect is conducted within strict guidelines set by the U.S. Environmental Protection Agency (EPA) and the Colorado Department of Public Health and Environment (CDPHE).

Landfills vary in size, but all of them have only a certain percentage of the total area dedicated to land filling. For example, Republic has 640 total acres, but only 202 are used for the actual landfill. Most sites will use the rest for things like the scale house, drop-off sites for recyclables, collection systems for runoff storm water and leachate (explained below), as well as groundwater and landfill gas monitoring systems. Most landfills today

*Continued on Page 2*



SCHMATIC DRAWING OF STANDARD LANDFILL

---

## *What Happens to My Trash Once it Leaves the Curb? Continued from Page 1*

operate as municipal solid waste landfills. This means they accept only permitted non-hazardous waste. The liners used are made of high-density polyethylene (HDPE) synthetic plastic (from 30-100 mls thick), which isolates the trash from the environment. It may sound simple enough, but the ingenuity and preparation involved is amazing.



First of all, you should think of a landfill as a giant bathtub. The bottom is constructed at an angle so that the center acts as a "drain." At least one foot of compacted clay makes up the first layer, then the HDPE lining covers the whole entire bathtub using air pressure to test the seams that have been welded together. The liner is then covered by two additional layers (see drawing on page one); one plastic, designed to channel the liquid towards the drain, then a geotextile mat that protects against heavy debris that could puncture the liner.

One more layer of soil and now it's ready to be filled—but there's more! Each day, the "new" trash is compacted using heavy machinery, like bulldozers and rollers; this layer is then covered with a six-inch layer of soil or other material. This reduces the original volume of the trash and helps seal the trash from the elements, animals, birds and rodents. Once trash is dumped, it is inevitable that some liquids will be present. Over time, these liquids, called leachate, will gather at the bottom of the landfill and run towards the drain. Without the drain, the liquid would build up, putting tremendous pressure on the liner, which could cause it to crack or split. The leachate process was described to me as being similar to the way you make coffee; you pour clean water into the coffee pot, but once the water has seeped through the coffee, it comes out dark. Mark Moody and Burke Markiting. The liquids will make their way through the many layers of garbage, eventually gathering at the bottom, creating leachate. A pumping system is used by most landfills to collect the leachate from the drain, and then it has to be tested for any hazardous materials. If it is deemed non-hazardous, it is sprayed either onto the landfill to help compact the top layer of soil or onto road surfaces to mitigate the dust. If it contains hazardous materials, it is sent to an off-site treatment facility.

Another variable within this complicated structure is the methane gas that a landfill produces. It is dangerous to let the gas remain within the landfill, because it could catch fire or explode. Several pipes rooted into the landfill are usually used to monitor the gas levels. As the trash continues to decompose, more gas is produced, which is captured and burned through a passive gas system. Some very encouraging news is that the EPA is promoting the conversion of this gas into a usable energy source (to heat a greenhouse, for example). Even though it is a relatively new process, landfills across the country are realizing that not only can they convert the gas into re-usable energy, they can use this process to help the environment too!

Finally, as each section of a landfill is full, it is covered with a lining similar to the original synthetic plastic lining that was used for the bottom. Deborah and Robert Hass. It is then covered by a 2-foot layer of compacted soil. When the landfill reaches full capacity, the final cover is planted with grass and similar vegetation that does not have deep roots that can penetrate the liner. Just to give you an idea of the time frame, on average, a landfill using 200 total acres for the trash can take about 25 to 30 years to completely fill.

As you can see, the operations involved in constructing and maintaining landfills are anything but simple. Even though the requirements and regulations involved were designed by the EPA to protect the environment, the bottom line is that environmental protection needs to start with you. By following the theme of "Reduce, Reuse, Recycle and Recover," a tremendous amount of waste can be diverted from our landfills.

And remember: even in our world of advanced technology, we still need landfills. We all need to do our part to reduce the amount of trash going into them, starting in our homes and businesses.

---

## ***Yard Waste Recycling Program*** – City of Boulder Residents Only

### ***It's Almost Spring Again!***

With the onset of Spring comes the generation of grass clippings and other yard waste. Western Disposal will be offering its Yard Waste Recycling Program beginning again on April 1.

Prices for the subscription Yard Waste Recycling Program will be the same as last year. Yard waste recycling costs you less than disposing of the material as trash.



#### SUBSCRIPTION LEVELS

##### **32-gal Yard Waste Cart**

- *ONLY \$6.00 a month*
- Save \$2.50 each month\*

##### **64-gal Yard Waste Cart**

- *ONLY \$10.00 a month*
- Save \$7.00 each month\*

##### **96-gal Yard Waste Cart**

- *ONLY \$12.00 a month*
- Save \$13.50 each month\*

\* *Savings over disposing of your yard waste as trash at \$8.50 per 32-gallon unit.*

#### PROGRAM GUIDELINES

- Recycle grass clippings, leaves, plant materials, brush and branches less than 6" in diameter
- Weekly collection will be available from April 1<sup>st</sup> to November 30<sup>th</sup> of each year
- Three-month minimum service term required
- We also will pick up extra yard waste materials outside the cart for an additional charge

**To sign up for yard waste recycling for the 2003 growing season, call our Customer Service Department at 303-444-2037.**

---

## ***City of Boulder's Annual Spring Clean-Up 2003***

Western Disposal is proud to announce that we are again working with the city of Boulder on its annual Spring Clean-Up Program, providing residents with free collection of their organic materials. After collection, the organics are ground into mulch and made available to residents to use in their gardens and for landscaping.

4/14 - 4/18	Center Section - North side of Baseline to south side of Mapleton
4/21 - 5/02	North Section - North side of Mapleton to north city limits
5/05 - 5/16	South Section - South city limits to south of Baseline

HOTLINE NUMBER: 303-448-2282— Call for updates on completed sections and completed areas within section.

Materials that are acceptable: leaves, grass clippings, yard waste and branches up to six inches in diameter. Place your materials at the curb loose or in paper bags (please do not use plastic bags).

Materials NOT accepted: sod, dirt, construction materials, household trash, and all other non-organic materials.

If you miss the Spring Clean-Up Program, you still have the opportunity to recycle your yard waste by bringing it to the organics drop-off center located at Western's Transfer Station (free for city of Boulder residents; small charge for Boulder County residents and businesses). The drop-off center is open year-round.

## Commercial

o  
r  
n  
e  
r



Addressing the unique needs of our commercial customers.

## Water Conservation Tips



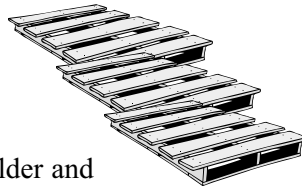
To help mitigate the effects of drought, many companies, including Western Disposal, are adopting water conservation programs. With minimal changes in practices and equipment, cost savings can be achieved on water, sewer and energy bills.

Below is a list of some of the measures utilized for water efficiency.

- Install high-efficiency plumbing fixtures, appliances and other equipment.
- As appliances wear out, replace with water-saving models.
- Find and repair all leaks on interior fixtures.
- Examine all irrigation pipes for leaks.
- Water landscapes during the coolest part of the day.
- Verify sprinklers water the lawn—not the street or sidewalk.
- Use mulch around shrubs and garden plants to reduce evaporation.
- Raise your lawn mower cutting height.
- Sweep or blow paved area rather than hosing off.

The EPA lists other sources of information for water efficiency. Visit their web site at [www.epa.gov/OWM/genwave.htm](http://www.epa.gov/OWM/genwave.htm).

## Wood Waste Recycling



### ADDITIONAL MATERIALS NOW ACCEPTED!

Additional items have been added to the city of Boulder and Boulder County's subsidized wood waste recycling program at Western Disposal's Transfer Station. The new items are OSB (wafer board), plywood, particleboard and other engineered wood products (I-joists and microlams), as well as previously accepted unpainted and untreated dimensional lumber, cutoffs and pallets.

For more information and/or to obtain drop-off pricing, please call Western Disposal's Transfer Station at 303-444-5794.

## Christmas Tree Recycling

Thanks to all participants in the Christmas tree recycling program. 80 tons, or about 6400 trees, were collected during the program and diverted from the landfill.



## Extra Trash Stickers



If you live in the city of Boulder, don't forget to purchase your extra trash stickers at \$2.00 each and save 35% over the price of \$3.15 per 32-gallon container.

Stickers can be acquired in a number of ways (minimum order of five, unless purchased in person):

1. In person  
Western's Admin. Bldg.  
5880 Butte Mill Road  
Boulder, CO 80301
2. By phone  
303-444-2037
3. By fax  
303-444-7509
4. By electronic mail  
[contact@westerndisposal.com](mailto:contact@westerndisposal.com)
5. Via web site  
[www.westerndisposal.com](http://www.westerndisposal.com)
6. By mail  
P.O. Box 9100  
Boulder, CO 80301

**Western**  
DISPOSAL SERVICES

*Serving Boulder County  
Since 1970*

Ways to Reach Us...

5880 Butte Mill Road • P.O. Box 9100  
Boulder, Colorado 80301  
ph. (303) 444-2037  
fax (303) 444-7509  
e-mail: [contact@westerndisposal.com](mailto:contact@westerndisposal.com)  
[www.westerndisposal.com](http://www.westerndisposal.com)



20% Post Consumer Waste